

GERD Case Study: Resolution of PPI associated Polyps

Demographics:

Age: 59 years
 Gender: Female
 BMI: 27.1
 GERD duration: 9 years
 PPI use: 9 years
 Pre-Procedure PPI use:
 Lansoprazole 30mg/day

Patient History: This 59 year old female experienced typical GERD symptoms for nine years, and was on PPIs for that entire time. PPI associated gastric polyps were diagnosed because of the medication usage.

Procedure:

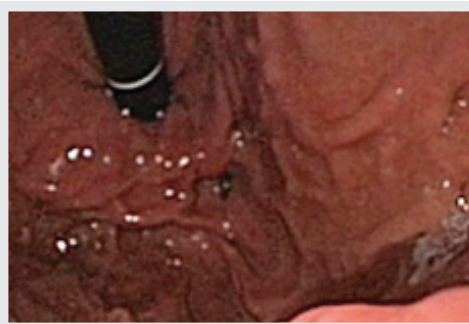
Pre-Procedure	6 month follow-up
Esophagitis Grade B, abnormal gastroesophageal junction (GEJ) anatomy confirmed by endoscopy; Gastroesophageal Valve (GEV) Hill Grade II	Esophagitis Grade A GEV Hill Grade I
PPI daily	No PPI usage since one week after the EsophyX procedure
Patient had PPI associated gastric polyps	Gastric polyps disappeared after procedure
Percent time pH <4 = 10.6% DeMeester Score: 37.9	Percent time pH <4 = 2.4%, a 77% improvement, pH normalized DeMeester Score: 9.4
GERD symptoms: Could not drink alcohol or eat chocolate	Symptoms no longer present Patient specifically indicated heartburn eliminated
GERD-HRQL assessment was done, and patient was “unsatisfied” Score 22 out of 45	GERD-HRQL score improved by 77% and patient is “satisfied” Score 5 out of 45

Fig. 1



Pre-Procedure GEV

Fig. 2



6 months Post-Procedure GEV

Conclusion: This long-term GERD sufferer had gastric polyps associated with 9 years of PPI use. The gastric polyps disappeared after the EsophyX ELF procedure because patient was able to discontinue use of PPI’s. The patient enjoyed chocolate and alcoholic beverages, but had abstained from them for 9 years due to GERD. She now can eat and drink as she prefers, without concern of heartburn. The normalized pH is an objective documentation of the improvement of her condition.